

PSA

Slotted Inserts

NOTCHED STRAP

Benefits

- *Rapid Installation in the field*
- *Most economical insert and strap*
- *Tight manufacturing tolerances result in a snugger fitting connection, reducing undesirable "play"*
- *Available in the JVI platinum J-Finish*
- *Available in 2" x 3/8" x 6", 8", 10", and 12" standard lengths*
- *Custom strap geometries available in large and small quantities upon request.*



Your Connection Connection

7131 North Ridgeway Avenue • Lincolnwood, IL 60712 USA
847/675-1560 • Fax 847/675-0083 • 1-800-742-8127 • <http://www.jvi-inc.com>

PSA

Slotted Inserts

NOTCHED STRAP

PSA Notched Strap Slotted Insert Shear Tests

Reported Failure Loads (lbf)

Complete 2006 test report available online @ www.jvi-inc.com

Part/Eccentricity Description		1" Eccentricity		1.5" Eccentricity	2" Eccentricity		3" Eccentricity	
		2005 Tests	2006 Tests	2005 Tests	2005 Tests	2006 Tests	2005 Tests	2006 Tests
MN62J		11,775	12,771	11,304	13,659	13,003	11,775	10,217
		13,188	13,932	13,242	14,130	13,003	12,246	10,217
			13,467			11,610		9,288
	Average	13,027		12,364	13,081		10,749	
	Lowest	11,700		11,300	11,600		9,200	

PSA Notched Strap Slotted Insert Tension Tests

Reported Failure Loads (lbf)

Complete 2006 test report available online @ www.jvi-inc.com

Part/Eccentricity Description		Insert Located Away from Concrete Edge (In the field)	
		Strap Centered in Slot Length	Strap Located at End of Slot Length
		2005 Tests	2005 Tests
MN62J W/ Notched Strap		13,932	13,003
		13,932	12,771
	Average	13,932	12,887
	Lowest ¹	10,200	10,200
		2006 Tests	2006 Tests
Notched Strap ²		11,145	10,217
		12,074	11,145
		13,003	11,145
		11,378	
	Average	11,900	10,836
	Lowest	10,200	10,200

Tension Table Notes

1. Lowest value is as determined from the "Notched Strap" 2006 testing as a limiting value
2. 2006 testing considered the notched strap tested installed in an insert with studs to isolate failures within the strap itself. The governing failure mode for the notched strap system is isolated within the notched strap. Combining the notched strap with an insert body with studs does not increase capacity.



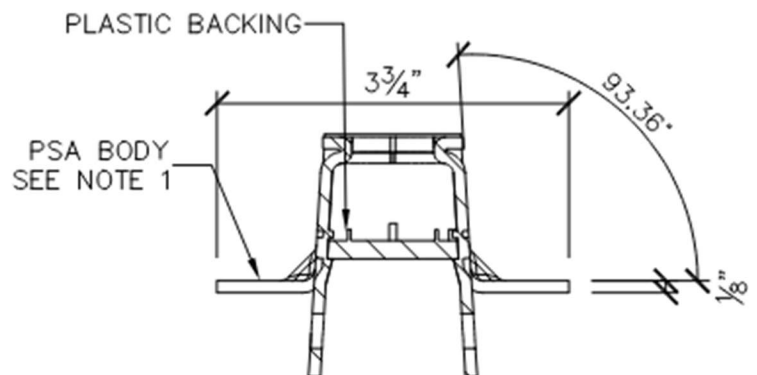
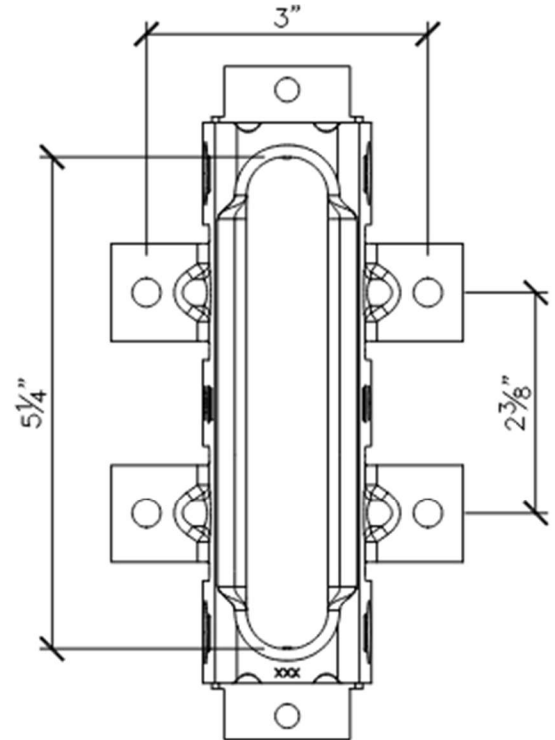
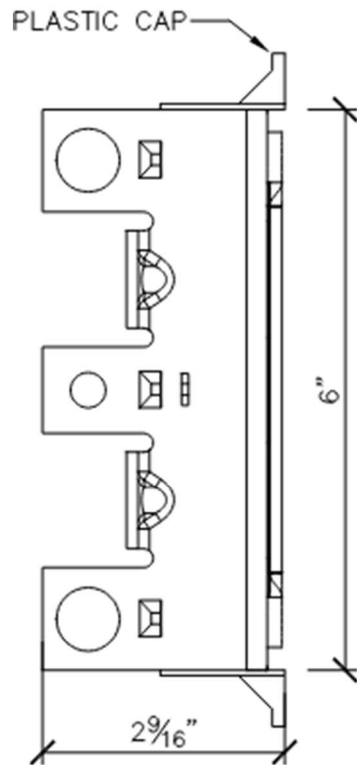
Your Connection Connection

7131 North Ridgeway Avenue • Lincolnwood, IL 60712 USA
847/675-1560 • Fax 847/675-0083 • 1-800-742-8127 • <http://www.jvi-inc.com>

PSA

Slotted Inserts

NOTCHED STRAP



PART NO.	DESCRIPTION	WT. (lbs)
MN62	PSA Notched Strap Insert	1.2

Note 1:

MATERIAL HOT-ROLLED, HLSA SAE J2340 070 XLF
AVAILABLE IN JVI J-FINISH



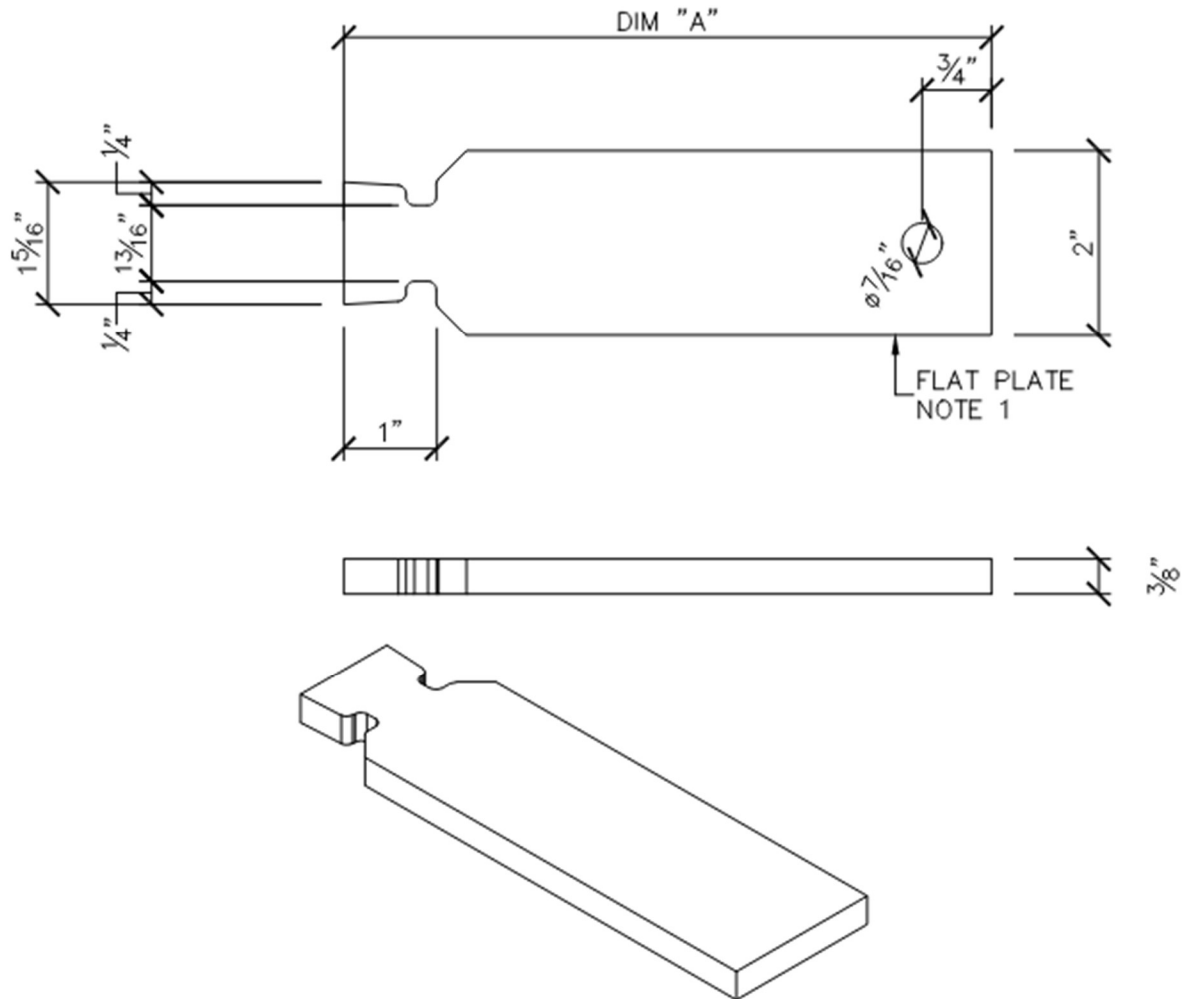
Your Connection Connection

7131 North Ridgeway Avenue • Lincolnwood, IL 60712 USA
847/675-1560 • Fax 847/675-0083 • 1-800-742-8127 • <http://www.jvi-inc.com>

PSA

Slotted Inserts

NOTCHED STRAP



Note 1:
 MATERIAL ASTM A36/A529 GR50, CSA G40.21, 44W
 AVAILABLE IN JVI J-FINISH

DIM "A"	PART NO.	DESCRIPTION	WT. (lbs)
7"	NS07	6" Notched Strap	1.4
9"	NS09	8" Notched Strap	1.8
11"	NS11	10" Notched Strap	2.2
13"	NS13	12" Notched Strap	2.6



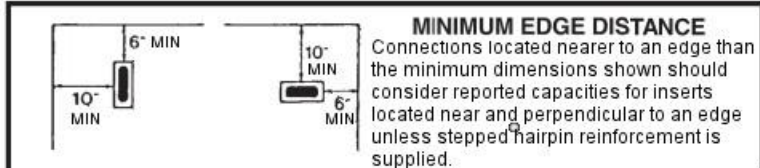
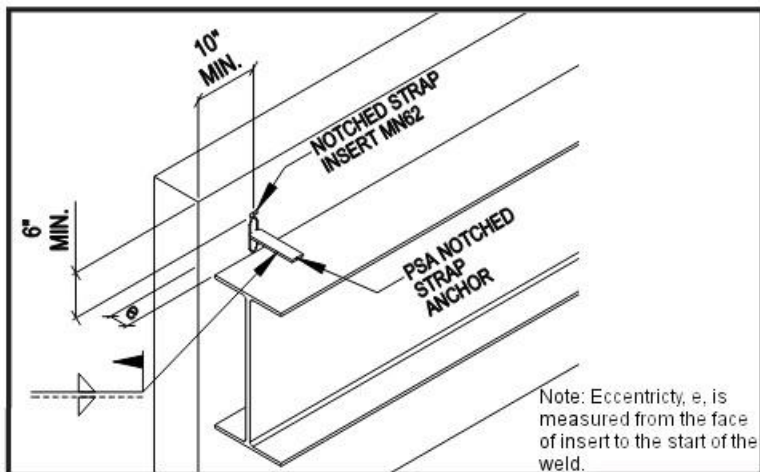
Your Connection Connection

7131 North Ridgeway Avenue • Lincolnwood, IL 60712 USA
 847/675-1560 • Fax 847/675-0083 • 1-800-742-8127 • <http://www.jvi-inc.com>

PSA

Slotted Inserts

NOTCHED STRAP

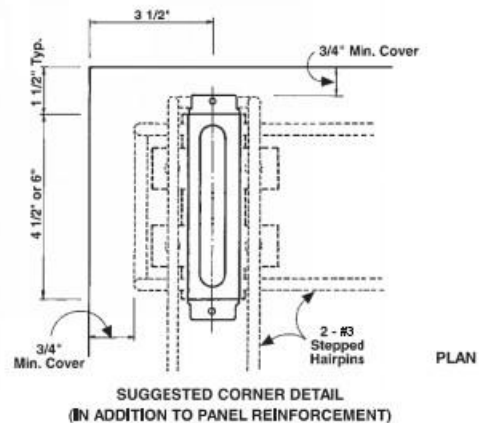
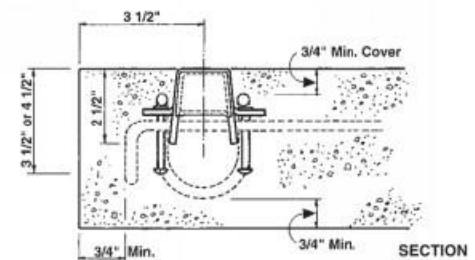


Your Connection Connection

7131 North Ridgeway Avenue
Lincolnwood, IL 60712 USA
847/675-1560 • Fax 847/675-0083 • 1-800-742-8127
<http://www.jvi-inc.com>



**STEPPED HAIR PIN REINFORCEMENTS
NEAR EDGE**



Missing the ORIGINAL PSA ?

No need to miss anything. JVI is happy to offer both the Original PSA and the Notched strap PSA.



The Original
PSA

PSA
Slotted Inserts

**NOTCHED
STRAP**



WE WELCOME YOUR INQUIRIES ON OTHER INNOVATIVE JVI CONNECTIONS!

DISCLAIMER: The use of JVI connections should be approved by a qualified professional engineer or architect.

Vector Connector

A shear/alignment
connection typically used in pre-topped
double tee flanges or wall panels.



The original engineered
R.O.F. structural
bearing pad and
still state-of-the-art.

MASTICORD™



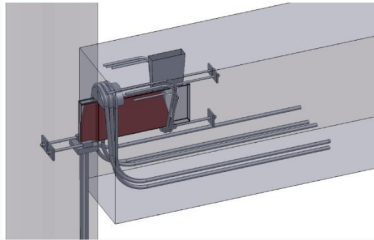
A shear/alignment
connection typically used
in field-topped
double tee
flanges or
wall panels.

The
mini-V
Connector



High capacity layered
duck load bearing pad for
commercial and highway
bridge applications.
Plain or PTFE coated for
slide bearing applications

CAPRALON™

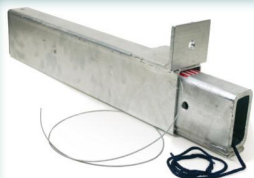


BSF
Hidden beam
end connection
for gravity loads
that eliminate
column corbels.



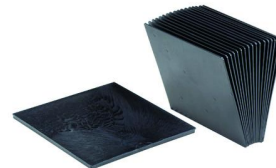
Molded neoprene or
natural rubber
bearing pads
conforming to
current AASHTO
specifications for
highway bridges.

NEWLON™



The only invisible, gravity
support solution for
double tees.
Technical data available
@ www.jvi-inc.com.

SHOOTER



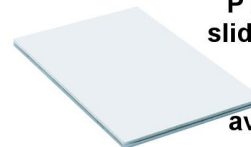
Solid, layered, high
strength plastic
shims for vertical
adjustment during
erection of precast
panels.

SHIMMERS™



An innovative solution to the
age-old question of how to
connect precast concrete
staircases.

RVK/TSS



PTFE coated steel for use in
slide bearings in combination
with a polished stainless
steel plate. Also
available applied to a range
of elastomeric bearing
pad products.

DYNALON™



Your Connection Connection

7131 North Ridgeway Avenue • Lincolnwood, IL 60712 USA
847/675-1560 • Fax 847/675-0083 • 1-800-742-8127 • <http://www.jvi-inc.com>

