
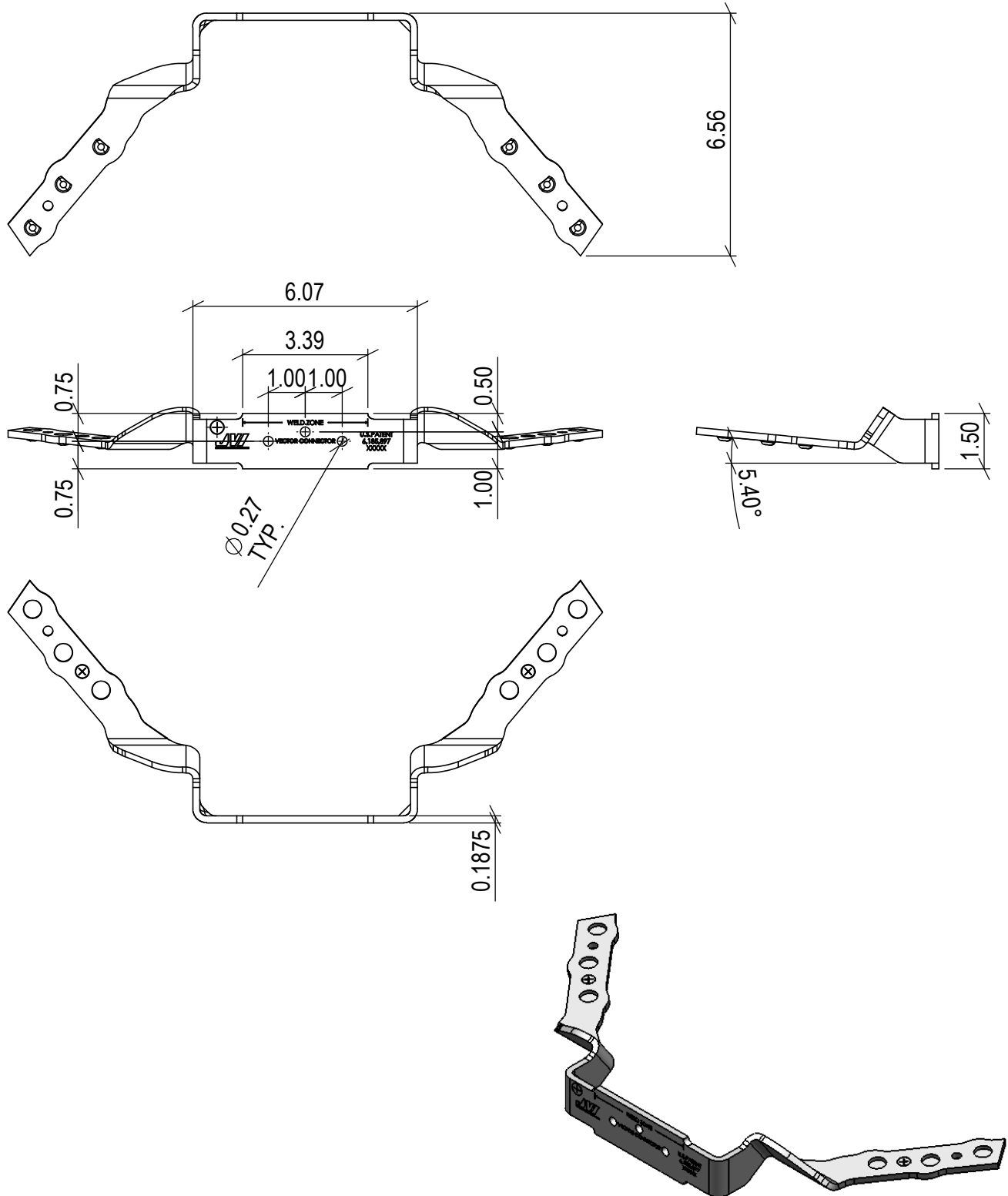


NOTES:

1. UNITS ARE INCHES
2. MATERIAL IS SAE HSLA 045XLF
3. FINISH IS JVI PLATINUM J-FINISH

TOTAL WEIGHT: 1.4 LBS


	7131 North Ridgeway Avenue Lincolnwood, Illinois 60712 USA Tel. 847/675-1560 - Fax 847/675-0083			VC401J
				SAE HSLA 045XLF W/ J-FINISH VECTOR CONNECTOR - VC4
DATE 05.05.2016	DRAWN JVI	CHECKED ---	SCALE 3"=1'-0"	

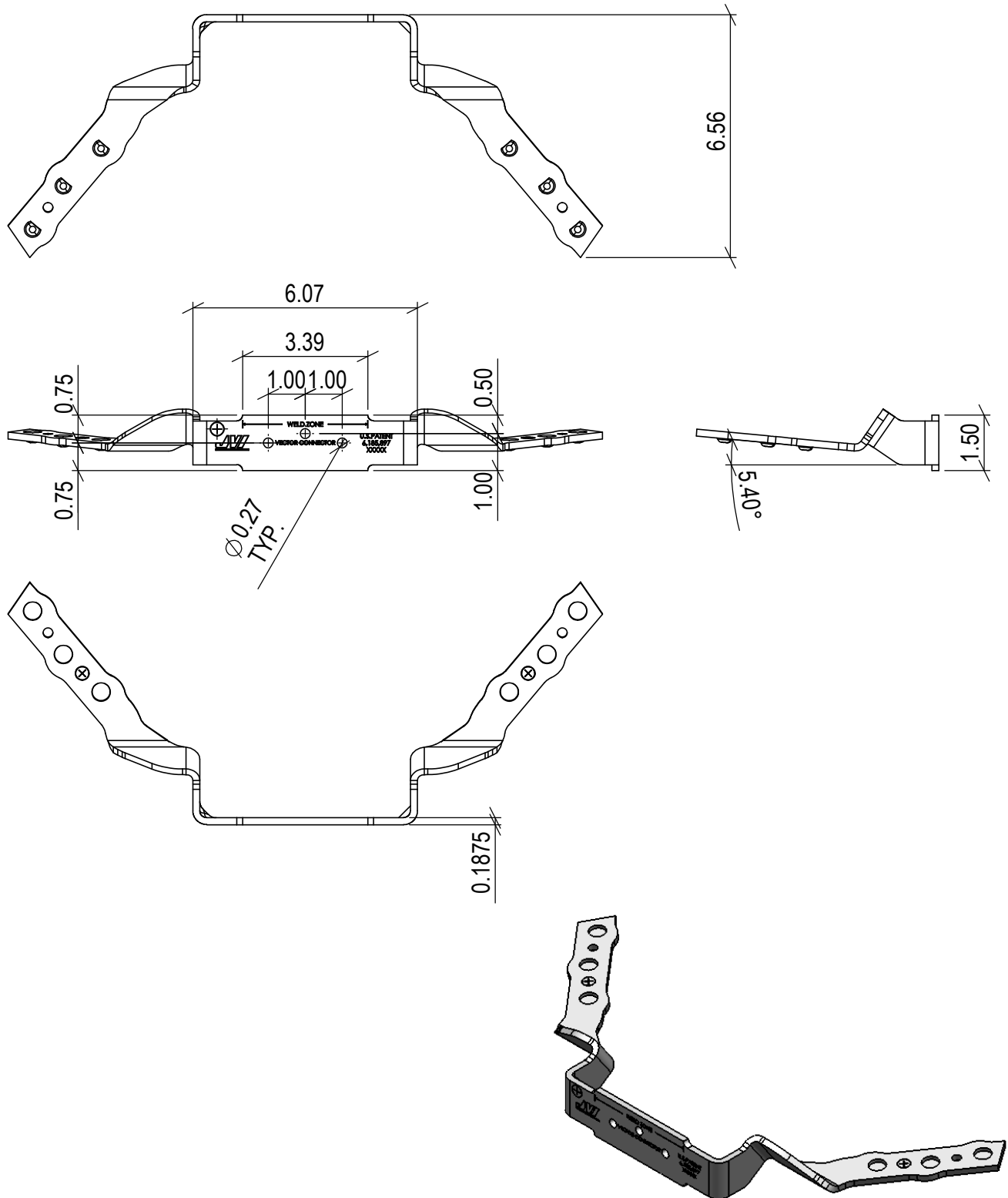


NOTES:

1. UNITS ARE INCHES
2. MATERIAL IS ASTM 201LN

TOTAL WEIGHT: 1.4 LBS

	7131 North Ridgeway Avenue Lincolnwood, Illinois 60712 USA Tel. 847/675-1560 - Fax 847/675-0083			VC4112
				201 LN - STAINLESS STEEL VECTOR CONNECTOR - VC4
DATE 10.21.2015	DRAWN JVI	CHECKED ---	SCALE 3"=1'-0"	



NOTES:

1. UNITS ARE INCHES
2. MATERIAL IS ASTM 304

TOTAL WEIGHT: 1.4 LBS



7131 North Ridgeway Avenue
 Lincolnwood, Illinois 60712 USA
 Tel. 847/675-1560 - Fax 847/675-0083

VC4113

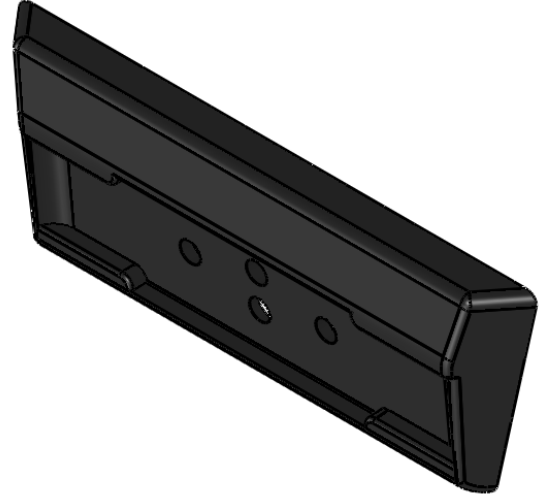
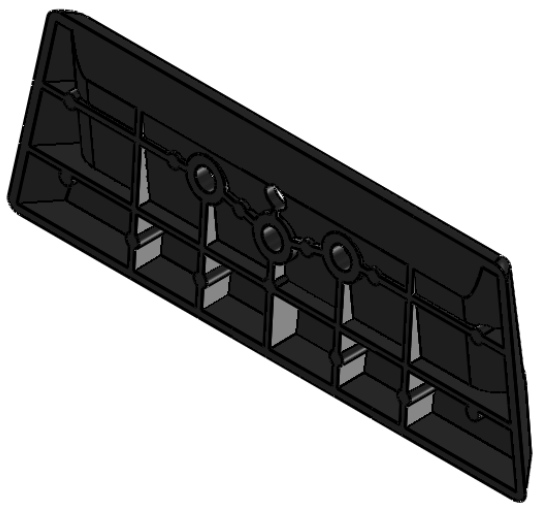
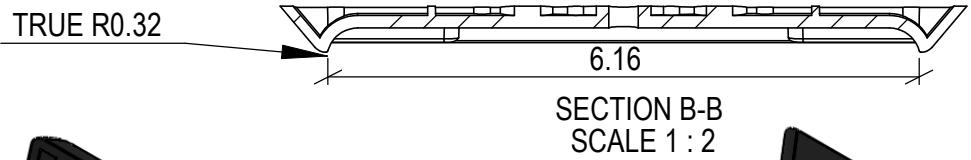
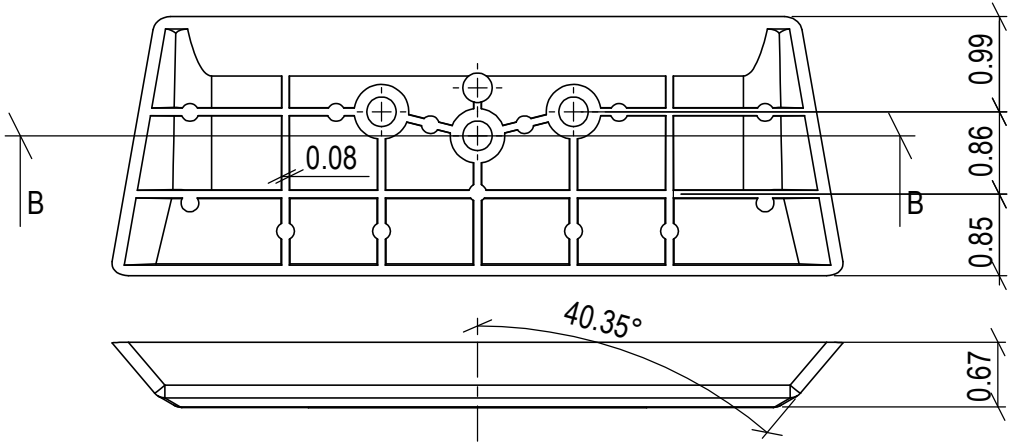
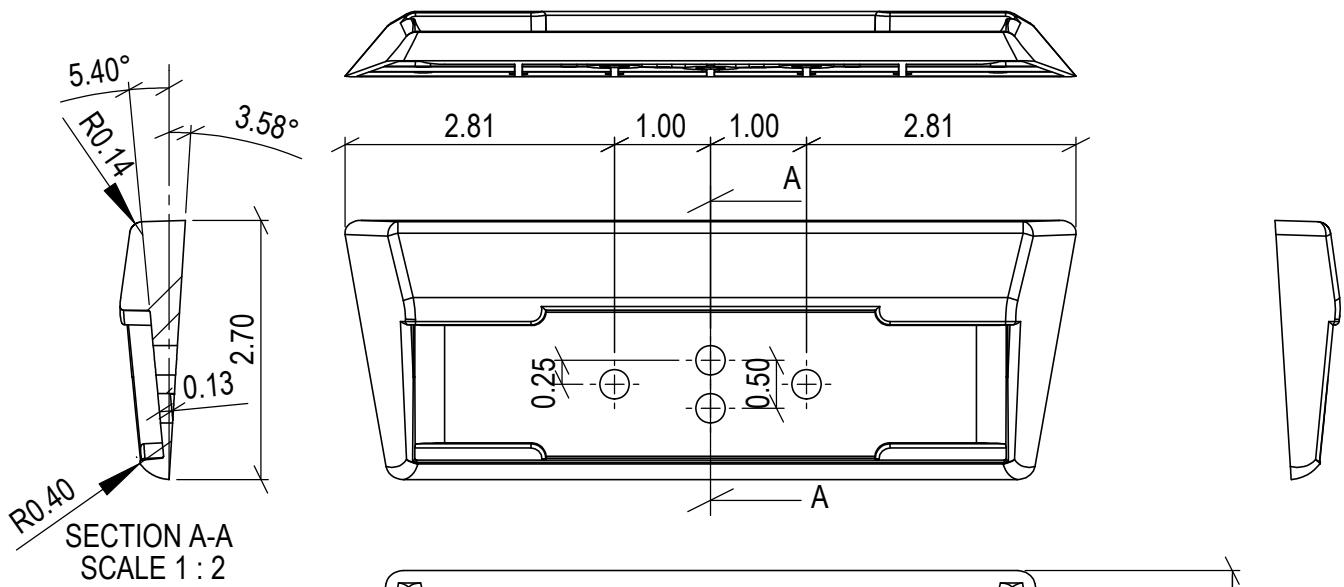
304 - STAINLESS STEEL
 VECTOR CONNECTOR - VC4

DATE
 10.21.2015

DRAWN
 JVI

CHECKED
 _ _ _ _

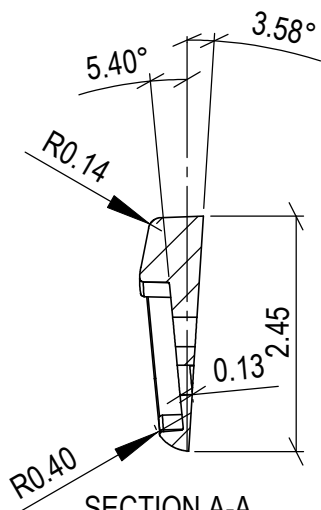
SCALE
 3"=1'-0"



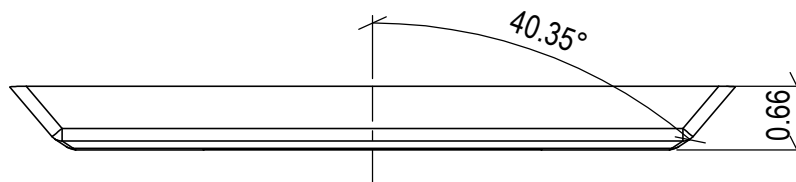
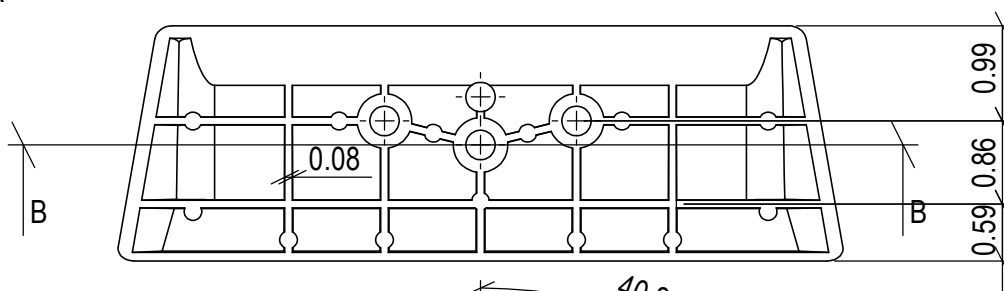
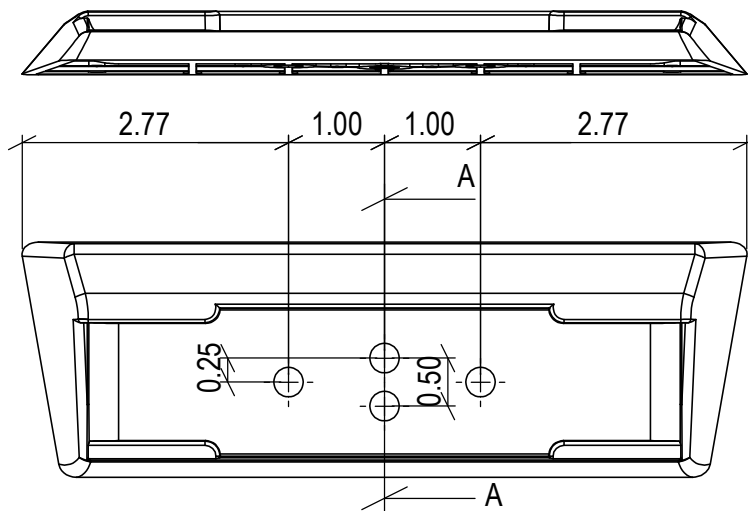
NOTES:

- 1. UNITS ARE INCHES
- 2. MATERIAL IS PLYABLE PLASTIC RUBBER BLENDED COMPOUND (BLACK) TOTAL WEIGHT: 0.17 LBS

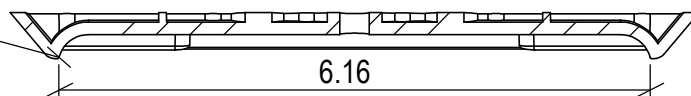
		7131 North Ridgeway Avenue Lincolnwood, Illinois 60712 USA Tel. 847/675-1560 - Fax 847/675-0083		BVC4100	
				VECTOR CONNECTOR 1" BLOCKOUT	
DATE 08.30.2016	DRAWN JVI	CHECKED ---	SCALE 1:2		



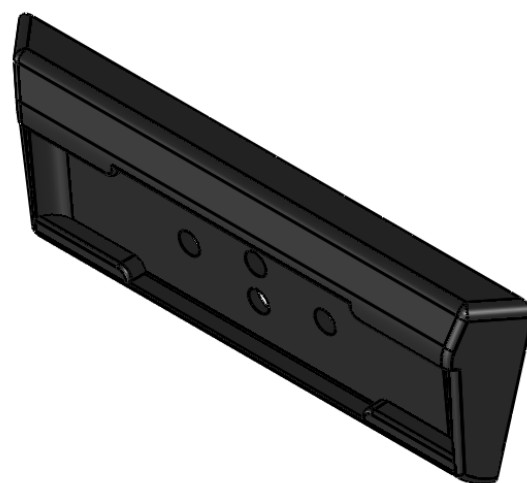
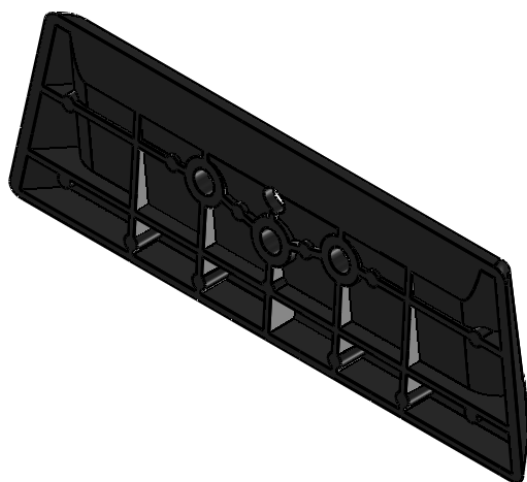
SECTION A-A
SCALE 1 : 2



TRUE R0.32



SECTION B-B
SCALE 1 : 2



NOTES:

1. UNITS ARE INCHES
2. MATERIAL IS PLYABLE PLASTIC RUBBER BLENDED COMPOUND (BLACK)

TOTAL WEIGHT: 0.15 LBS

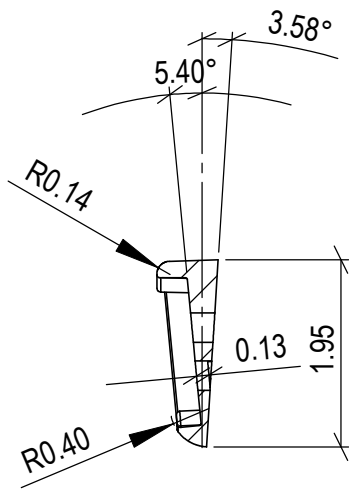


7131 North Ridgeway Avenue
Lincolnwood, Illinois 60712 USA
Tel. 847/675-1560 - Fax 847/675-0083

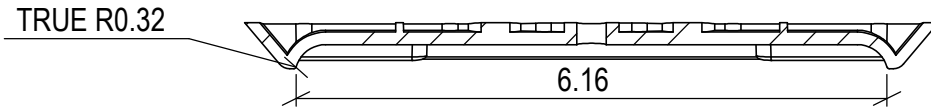
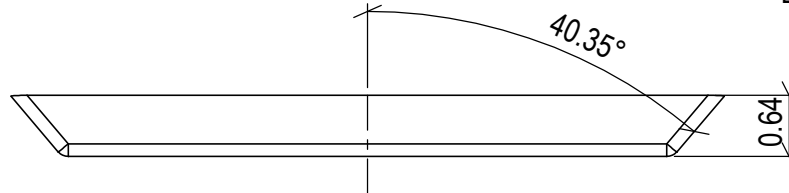
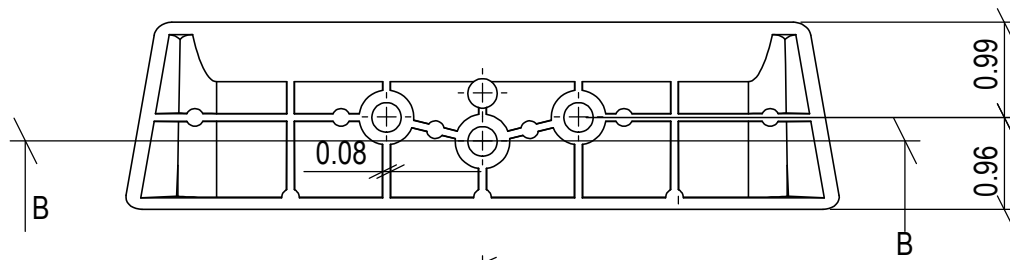
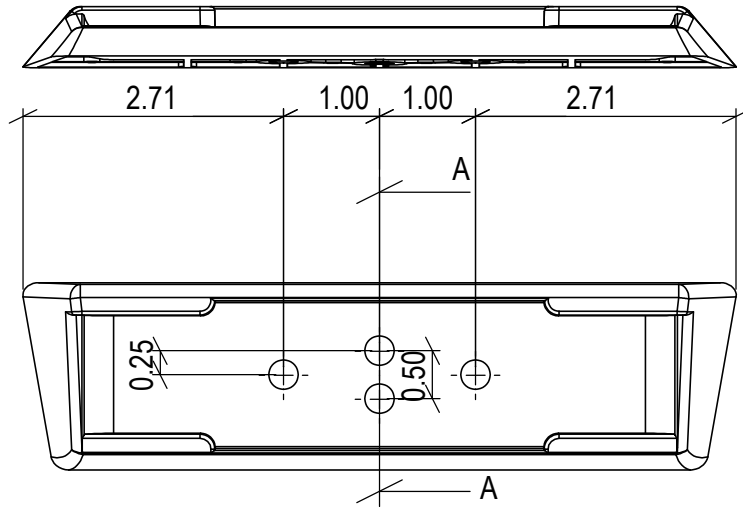
BVC4075

DATE 08.30.2016	DRAWN JVI	CHECKED ---	SCALE 1:2
--------------------	--------------	----------------	--------------

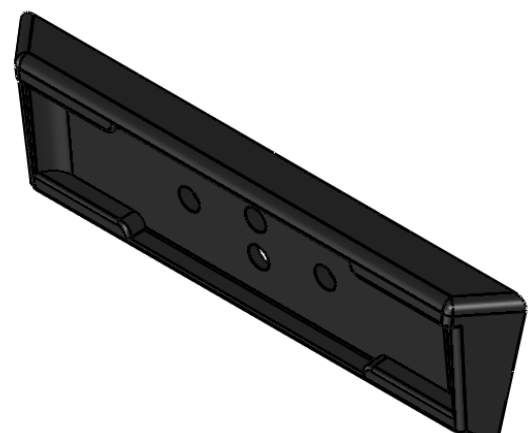
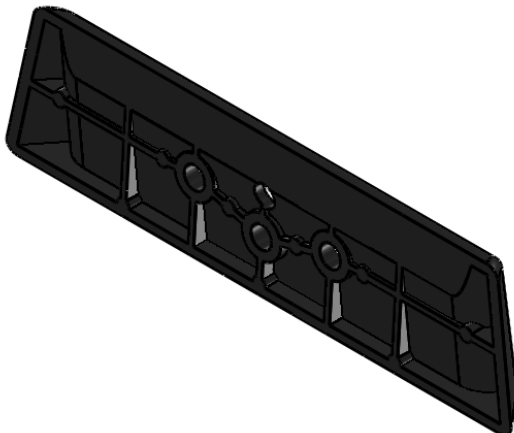
VECTOR CONNECTOR 3/4" BLOCKOUT



SECTION A-A
SCALE 1 : 2



SECTION B-B
SCALE 1 : 2



NOTES:

1. UNITS ARE INCHES
2. MATERIAL IS PLYABLE PLASTIC RUBBER BLENDED COMPOUND (BLACK)
3. BLOCKOUT INTENDED TO BE USED W/ PETERSON JOINT. MIN OF 3/4" TOTAL RECESS REQUIRED FOR USE OF RECOMMENDED NOMINAL CAPACITEIS REPORTED BY JVI

TOTAL WEIGHT: 0.12 LBS

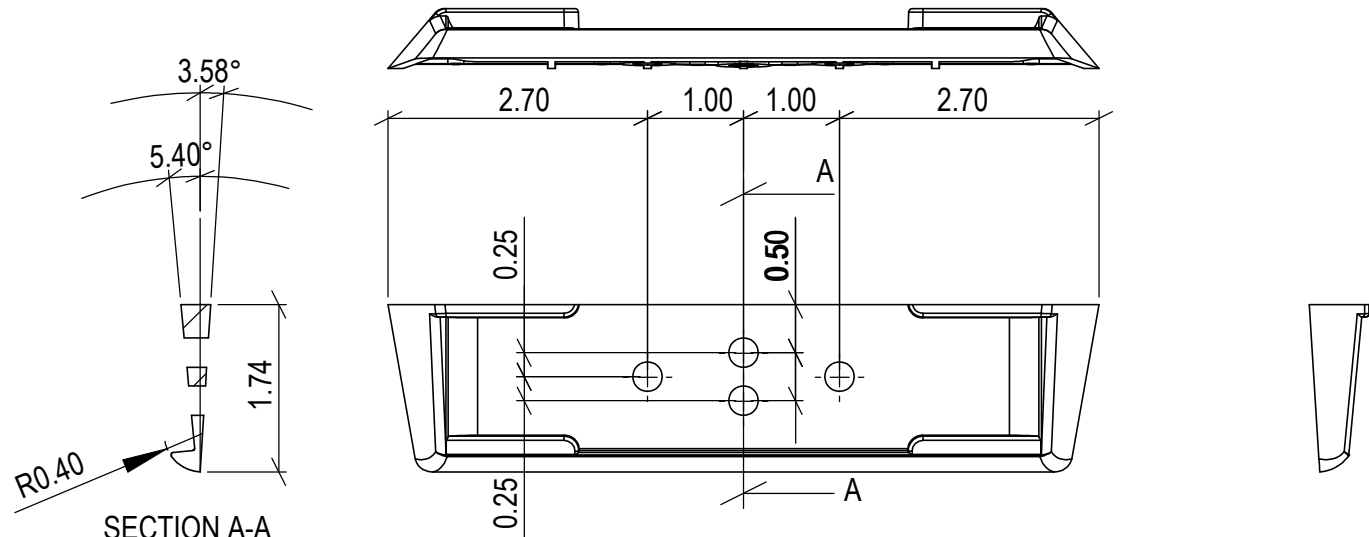


7131 North Ridgeway Avenue
Lincolnwood, Illinois 60712 USA
Tel. 847/675-1560 - Fax 847/675-0083

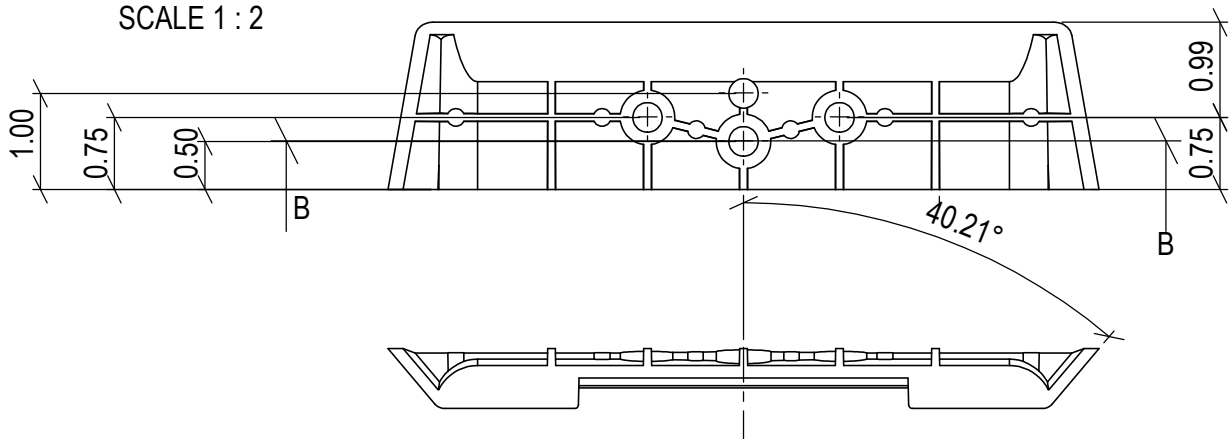
BVC4025

VECTOR CONNECTOR 1/4" BLOCKOUT

DATE 08.30.2016	DRAWN JVI	CHECKED ---	SCALE 1:2
--------------------	--------------	----------------	--------------

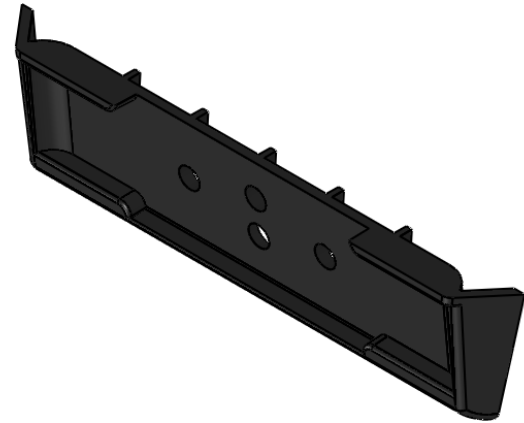
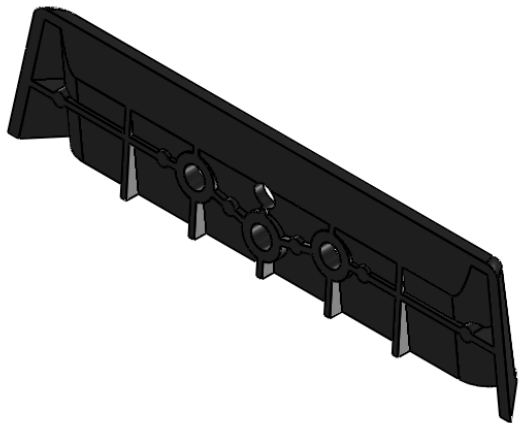


SECTION A-A
SCALE 1 : 2



TRUE R0.32

SECTION B-B
SCALE 1 : 2



NOTES:

1. UNITS ARE INCHES
2. MATERIAL IS PLYABLE PLASTIC RUBBER BLENDED COMPOUND (BLACK)
3. BLOCKOUT INTENDED TO BE USED W/ PETERSON JOINT. MIN OF 3/4"
TOTAL RECESS REQUIRED FOR USE OF RECOMMENDED NOMINAL
CAPACITEIS REPORTED BY JVI

TOTAL WEIGHT: 0.12 LBS

	7131 North Ridgeway Avenue Lincolnwood, Illinois 60712 USA Tel. 847/675-1560 - Fax 847/675-0083			BVC4FLUSH
				VECTOR CONNECTOR FLUSH BLOCKOUT
DATE 01.18.2017	DRAWN JVI	CHECKED ---	SCALE 1:2	